

### QUICK LEVEL electropneumatic level monitor

Continuous tank level monitoring. QUICK LEVEL detects the static pressure generated by the fluid height by means of a tube inserted into the tank and displays the fluid level or volume.

The system consists of:

- A tube for detecting static pressure: The tube end is inserted from the top of the tank and lowered down into the liquid until it touches the bottom.
- A control unit for displaying the level and managing the system. The unit is equipped with an intuitive, complete software and permits the connection of two alarm or lock devices.

#### The software is used to:

- Set tank type and dimensions
- Define alarm levels
- Define indication level
- Define measurement unit
- Calibrate the instrument

Depending on the set alarm levels, the control unit activates or deactivates the contact by acting as a remote switch for starting the alarms or cutting power to the connected equipment.

**Maximum measurable height: 4 m.**

**Probe tube length: 10 m.**



### Technical Data

- Power Supply: 230 V/50 Hz (120V/60 Hz)
- Protection degree : IP 55
- Maximum measurable height : 4 Mt
- Accuracy :  $\pm 1$  % full-scale
- Minimum and Maximum level switch : 250Vac max at 5 Amps (or 30Vdc at 5 Amps)
- Probe tube length : 10 m (extendable up to 50 m)
- Level indication: Height (mm, inches); Volume (liters, gallons); Filling percentage (%); RS out available.

### Advantages

- Continuous measurement
- Indication in height, volume, and filling percentage
- Maximum and minimum level alarms
- High accuracy
- Intuitive software installation procedure
- Simple installation
- Possibility of connection to PC.

### Features

Code	Description	Liquid	Viscosity cSt	AC (Volt/Hz)	RS out	Power (Watt)	Weight (kg)
F0075510D	Level indicator QUICK LEVEL LV / RS output	any	up to 30	230/50	230/50	20	2.2
F0075511D	Level indicator QUICK LEVEL LV / RS 120V output	any	up to 30	120/60	120/60	20	2.2
F00755140	QUICK LEVEL Urea	Urea	Urea	230/50	230/50	20	2.2
F00755160	Level indicator QUICK LEVEL LV / 4/20 mA output	any	up to 30	230/50		20	2.2

### QUICK LEVEL Software

QUICK LEVEL is available with direct PC connections. By means of an interface you can connect up to 12 QUICK LEVEL level gauges and send data direct via cable to PC up to 1,000 meters away.

A dedicated software has been developed to permit storing historic tank level data according to different criteria:

- at each time interval
- at each variation in level
- at each variation in volume.

The recorded data is displayed as a diagram showing the historical tank levels data.

Software permits configuration of each tank and alarm type.

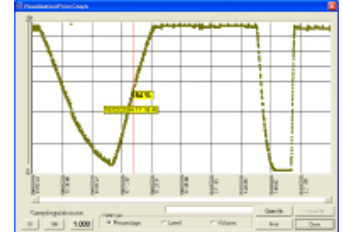


## Software Operation

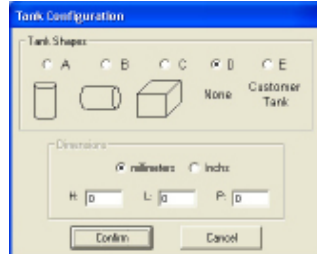
1) A window can display on the PC screen the data for level, volume, and percentage of contained volume.



2) With the recorded data, you can view a diagram showing the historical data of the level in the tank.

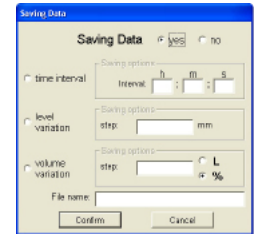


3) **Tank configuration:** the software allows the configuration of each type of tank. Besides the standard tank, cylindrical or cubic, it is possible to set any shape. By selecting "Customer Tank" you can fill the tank information table up to 100 points.

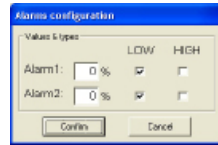


4) it was developed a dedicated software that allows you to save the historical data of the level in the tank according to different criteria:

- at every time interval
- at every level change
- at each change in volume.



5) **Alarm Configuration:** 2 alarms are available, which can be configured via software.



6) It is also possible to define a location to save the data to an external .txt file

Start on 18/02/2004 at 14.11.51  
Time interval =X:X:X

Date	Time	Level	Volume	Percentage
18/02/2004	14.12.17	1870	72257	46

## Software Features and Packaging

Code	Description	Weight (kg)	Packaging (mm)
F00755S1A	QUICK LEVEL desk SINGLE TANK (software + PC interface for 1 tank)	0,4	200x120x140
F00755S0B	QUICK LEVEL desk MULTITANK 4 (software + PC interface up to 4 tanks)	1,1	200x120x140
F00755S2A	QUICK LEVEL desk MULTITANK 8 (software + PC interface up to 8 tank)	2,5	200x120x140
F00755S3A	QUICK LEVEL desk MULTITANK 12 (software + PC interface up to 12 tanks)	3,1	200x120x140

## GSM transmission of tank level

This system responds to demand for remote monitoring of tank levels by displaying the current situation on a telephone display or to an email address. The transmitter with GSM modem is connected to the OCIO level indicator and via one or more expansions controls up to 8 tanks. Each tank is supplied with a level indicator connected via cable to the OCIO GSM unit or a single expansion. Configuration of the system is carried out by sending a coded message over the telephone.

With the QUICK LEVEL GSM system you can:

- Request at any time the level in the tank.
- Set two alarms (minimum and maximum) and send the alarm message to one or more enabled phone numbers
- Send to selected time intervals a message with your fuel tank to preset numbers

### Advantages:

It applies in all cases where it is required level monitoring without being in the site.

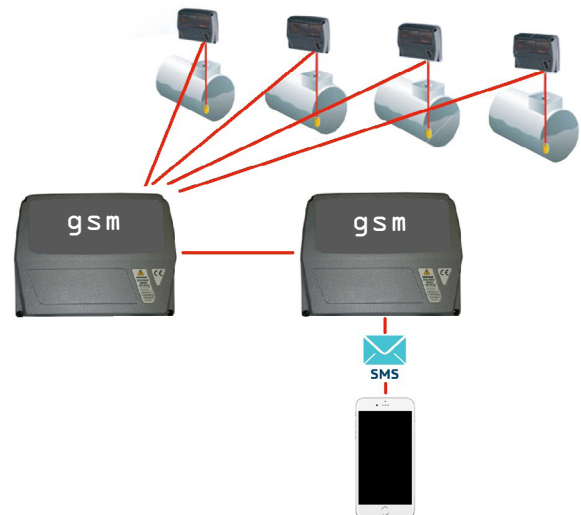
This allows a saving of time and ensures the execution of the reading in any situation.

Send alarm messages to alert the provider or system maintainer, which can provide for the filling of the tank or its emptying, as happens in the case of disposal of used fluids.

By sending messages at regular intervals you can run a monitoring of the installations and ensure continuity of service by operators and suppliers. You can thus achieve considerable savings through more efficient logistic organization of refueling or disposal trips.

QUICK LEVEL GSM, an attendant at your service.

## Example



## QUICK LEVEL Gsm

Code	Description	AC (Volt / Hz)	Weight	Packaging
F00755G30	GSM Quad band	110-230 / 50-60	1,5	300 x 410 x 100
F00755G20	Expansion GSM tank 2-4		1,5	300 x 410 x 100
F00755G40	Expansion GSM tank 5-8		1,5	300 x 410 x 100

## Network transmission of the tank level

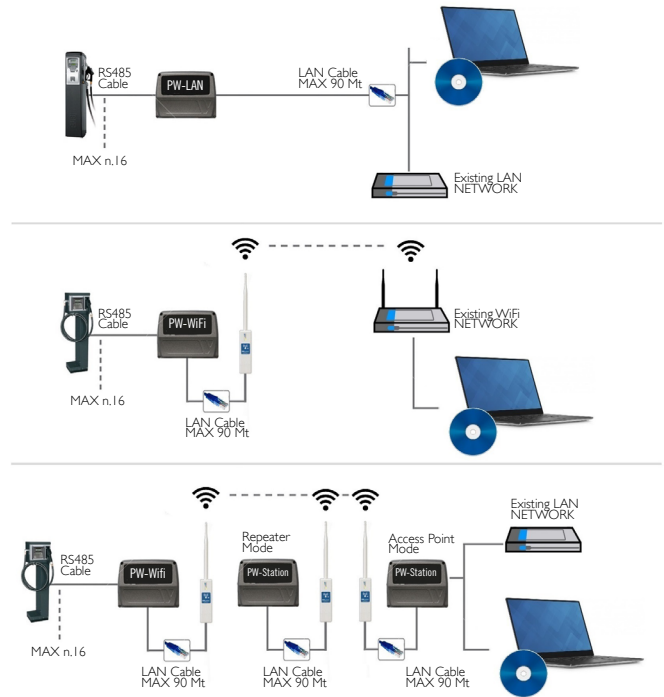
PW-LAN, PW-WiFi and PWStation-WiFi are the new solutions that allow QUICK LEVEL devices to be connected to a LAN or WiFi network. Piusi devices are recognized as IP addresses that can be accessed on a company intranet.

The new Wi-Fi and LAN networks expand the possibilities of allowing products to talk to QUICK LEVEL software, exceeding the limits imposed by RS485 connections.

QUICK LEVEL products can be connected to the software applications easily and in a functional manner, solving the problems associated with long distances.

## Versions

Code	Description	Device	Included software
F12710050	KIT PW-LAN SELF SERVICE DESK	PW-LAN	SELF SERVICE DESK
F12710040	KIT PW-WIFI SELF SERVICE DESK	PW-WiFi	SELF SERVICE DESK
F1271009A	PWSTATION-WIFI	PWStation-WiFi	-
F00755SBA	KIT PW-WIFI DESK SINGLE TANK	PW-WiFi	DESK SINGLE TANK
F12710100	KIT PW-LAN PC INTERFACE SOFTWARE MCO	PW-LAN	PC INTERFACE SOFTWARE MCO
F12710110	KIT PW-WIFI PC INTERFACE SOFTWARE MCO	PW-WiFi	PC INTERFACE SOFTWARE MCO



PW-LAN is a new solution that makes it possible to connect QUICK LEVEL products to a LAN network. PW-LAN is an advanced device with several different methods of converting an RS485 signal into an Ethernet signal by means of a simple and intuitive interface. PW-LAN offers:

- Instant conversion of an RS485 signal to Ethernet
- IP fallback function
- Compatibility with all DHCP servers

PW-WiFi is composed of two different devices:

- an electronic card that converts an RS485 into an Ethernet signal.
- a WiFi module/antenna that makes it possible to connect the LAN card to an existing WiFi network. PW-WiFi offers:

- Instant conversion of an RS485 signal to Wi-Fi
- IP fallback function
- Compatibility with all DHCP servers

Riels proposes the PWStation-WiFi device, which makes it possible to create a WiFi network, if otherwise unavailable. The device is an access point that is compatible with all commercially available routers. PWStation-WiFi provides the facility to:

- create a WiFi network.
- increase the signal coverage using several PWStation-WiFi devices.