

RIV980

**FLOW CONTROL WITH
INTEGRAL FLAPPERS
OR PROPELLER**

**FLOW
CONTROLS**



RIV980 stainless steel 316L sight glass with double tempered glass. Integral flappers or propeller

Made for the control of movement of liquids, they are suitable for the passage of water, oils, gasoline, diesel, etc.

- Body made of AISI 316L steel or carbon steel.
- Double calcium-sodium tempered glass or DIN7080 borosilicate tempered glass.
- Tempered calcium-sodium glass from -10°C to 160°C.
- Tempered borosilicate glass from -10°C to 280°C and up to 300°C if protected with MICA (but MICA should be replaced after 300 hours of use in temperature).
- Internal Fan and support ring made of AISI304. MOPLEN (Red or White) fan on request.
- Fasit® 400 seals (Max 400°C).

For a correct mounting the valve must be installed following the flow direction indicated by the arrow engraved on the body.
Use to seal the threads of a material compatible with the fluid used.
On order to maintain the watertight on the threads, a material compatible with the fluid must be used.
Screw the valve on the threaded tubes by positioning the key exclusively on the special hexagonal parts up to the locking of the valve on the tube.

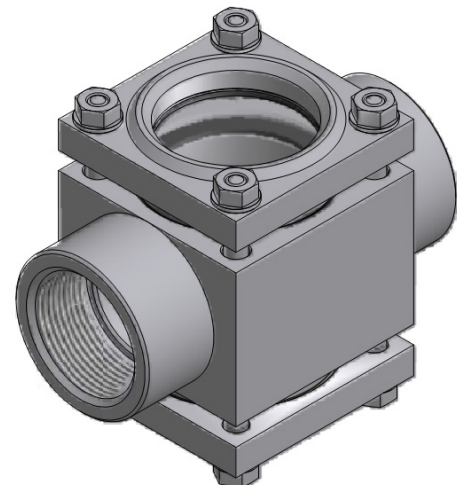
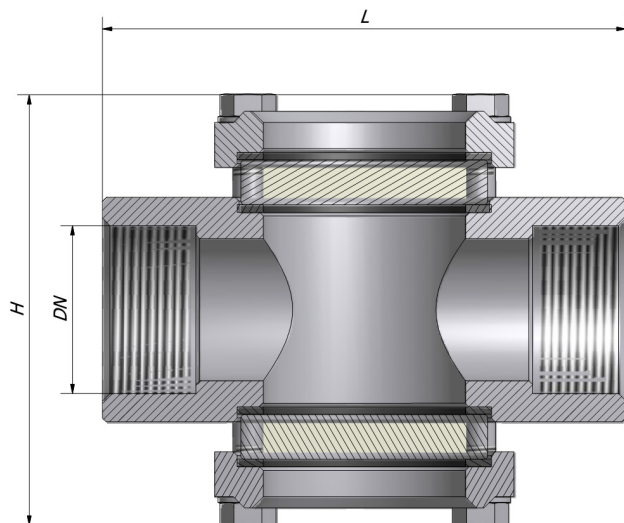
After connecting the valve to the pipes, make sure the valve does not suffer stress due to piping, so use of heavy clamps to support the piping.

Slowly open the upstream shutoff devices to prevent water hammer.



RIV980 AISI316L sight flow indicator with integral flappers

Code	Size "G"	Body	Calcium-sodium glass temperature	Borosilicate glass temperature	Pressure Max. up to a 37°C	Pressure Max. up to 148°C	Pressure Max. up to 204°C	Pressure Max. up to 300°C	L	H
RIV980-15	1/2" GF	AISI316L or carbon steel	-10°C + 160°C	-10°C + 280°C	40 bar	38 bar	35 bar	20 bar	105	85
RIV980-20	3/4" GF	"	-10°C + 160°C	-10°C + 280°C	40 bar	38 bar	35 bar	20 bar	105	85
RIV980-25	1" GF	"	-10°C + 160°C	-10°C + 280°C	40 bar	38 bar	35 bar	20 bar	105	85
RIV980-32	1" 1/4 GF	"	-10°C + 160°C	-10°C + 280°C	40 bar	38 bar	35 bar	20 bar	130	110
RIV980-40	1" 1/2 GF	"	-10°C + 160°C	-10°C + 280°C	40bar	38 bar	35 bar	20 bar	140	110
RIV980-50	2" GF	"	-10°C + 160°C	-10°C + 280°C	40 bar	38 bar	35 bar	20 bar	155	125



RIV980 AISI316L sight flow indicator with propeller

Code	Size "G"	Body	Calcium-sodium glass temperature	Borosilicate glass temperature	Pressure Max. up to 37°C	Pressure Max. up to 148°C	Pressure Max. up to 204°C	Pressure Max. up to 300°C	L	H
RIV980V-15	1/2" GF	AISI316L or carbon steel	-10°C + 160°C	-10°C + 280°C	40 bar	38 bar	35 bar	20 bar	105	87
RIV980V-20	3/4" GF	"	-10°C + 160°C	-10°C + 280°C	40 bar	38 bar	35 bar	20 bar	105	87
RIV980V-25	1" GF	"	-10°C + 160°C	-10°C + 280°C	40 bar	38 bar	35 bar	20 bar	105	87
RIV980V-32	1" 1/4 GF	"	-10°C + 160°C	-10°C + 280°C	25 bar	23 bar	20 bar	10 bar	130	112
RIV980V-40	1" 1/2 GF	"	-10°C + 160°C	-10°C + 280°C	25bar	23 bar	20 bar	10 bar	140	112
RIV980V-50	2" GF	"	-10°C + 160°C	-10°C + 280°C	25 bar	23 bar	20 bar	10 bar	155	127

